

State of Wyoming Corner Record

(In compliance with the **CORNER PERPETUATION AND FILING ACT**, Wyoming Statutes, 1997 Section 33-29-140 et. seq., and the Rules and Regulations of the Board of Professional Engineers and Professional Land Surveyors)

Reverse side of this form may be used if more space is needed.

Record of original survey and citation of source of historical information (if corner is lost or obliterated). Description of corner monumentation evidence found and/or monument and accessories established to perpetuate the location of this corner. Sketch of relative location of monument, accessories, and reference points with course and distance to adjacent corner(s) (if determined in this survey). Method and rationale for reestablishment of lost or obliterated corner.

RECORD OF ORIGINAL SURVEY AND SUBSEQUENT HISTORY: Date of Survey: 1870 Surveyor: John B. Thomas

Set a Granite Boulder 18x12x12 for for $\frac{1}{4}$ Sec. Cor.

INSTRUMENT NUMBERS OF RECORDS PREVIOUSLY RECORDED OR FILING DATA:

Record: 1974 Surveyor: Vern Lane

$\frac{1}{4}$ sec. corner, secs. 11 and 12 (bolt in center of concrete) shown on Read Tracts plat.

Record: 1993 Surveyor: Paul Reid

Found 8" x 8" concrete monument with exposed threaded bolt with a cross cut in center of monument.

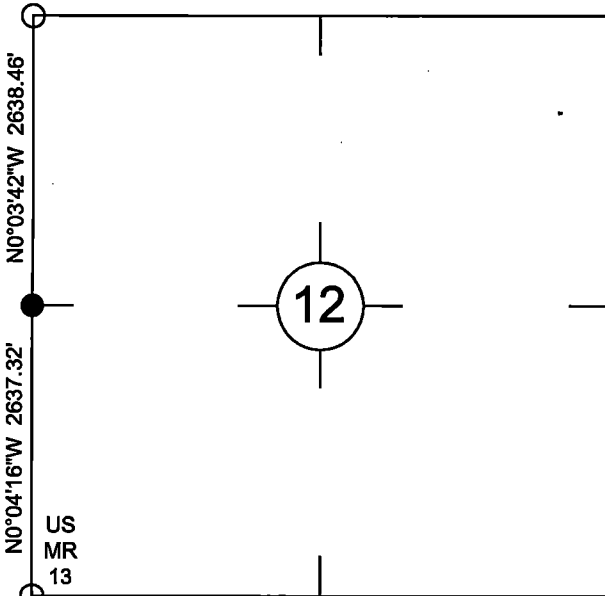
Record: 1999 Surveyor: Larry Perry

$\frac{1}{4}$ sec. corner, secs. 11 and 12 (bolt in center of concrete) - shown on Forster Estates plat.

DESCRIPTION OF CORNER EVIDENCE FOUND:

Dug a large hole several feet deep and found no evidence of the bolt in concrete. At the proportionate distance from the Paul Reid survey set a 2" aluminum cap on $\frac{3}{4}$ " x 30" rebar marked as shown.

Monument location

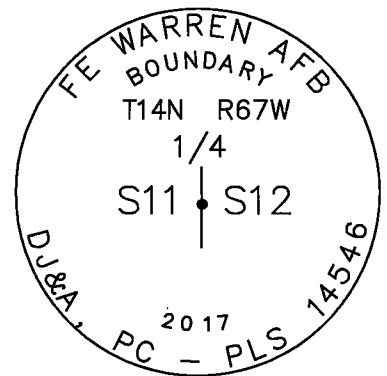


Date of Field Work: 10/20/17

Office Reference: =

NAD 83(2011) coordinates for this corner:
 Latitude = N41°11'47.870" Longitude = W104°50'51.679"
 NOTE: These coordinates are to be used as a search tool only.

Monument Inscription



BASIS OF BEARING: WYOMING STATE PLANE EAST ZONE GRID NORTH.

Cross Index Plat

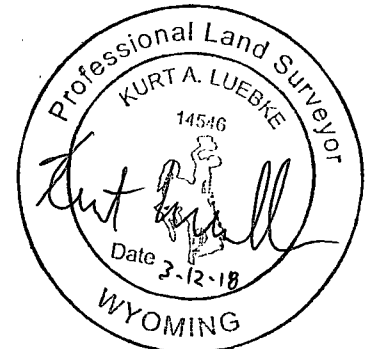
1	2	3	4	5	6	7	8	9	10	11	12	13	14	15	16	17	18	19	20	21	22	23	24	25	
+	+	+	+	+	+	+	+	+	+	+	+	+	+	+	+	+	+	+	+	+	+	+	+	+	A
+	6	+	5	+	4	+	3	+	2	+	1	+													B
+	+	+	+	+	+	+	+	+	+	+	+	+	+	+	+	+	+	+	+	+	+	+	+	+	C
+	+	+	+	+	+	+	+	+	+	+	+	+	+	+	+	+	+	+	+	+	+	+	+	+	D
+	+	+	+	+	+	+	+	+	+	+	+	+	+	+	+	+	+	+	+	+	+	+	+	+	E
+	7	+	8	+	9	+	10	+	11	+	12	+													F
+	+	+	+	+	+	+	+	+	+	+	+	+	+	+	+	+	+	+	+	+	+	+	+	+	G
+	+	+	+	+	+	+	+	+	+	+	+	+	+	+	+	+	+	+	+	+	+	+	+	+	H
+	+	+	+	+	+	+	+	+	+	+	+	+	+	+	+	+	+	+	+	+	+	+	+	+	I
+	+	+	+	+	+	+	+	+	+	+	+	+	+	+	+	+	+	+	+	+	+	+	+	+	J
+	18	+	17	+	16	+	15	+	14	+	13	+													K
+	+	+	+	+	+	+	+	+	+	+	+	+	+	+	+	+	+	+	+	+	+	+	+	+	L
+	+	+	+	+	+	+	+	+	+	+	+	+	+	+	+	+	+	+	+	+	+	+	+	+	M
+	+	+	+	+	+	+	+	+	+	+	+	+	+	+	+	+	+	+	+	+	+	+	+	+	N
+	+	+	+	+	+	+	+	+	+	+	+	+	+	+	+	+	+	+	+	+	+	+	+	+	O
+	19	+	20	+	21	+	22	+	23	+	24	+													P
+	+	+	+	+	+	+	+	+	+	+	+	+	+	+	+	+	+	+	+	+	+	+	+	+	Q
+	+	+	+	+	+	+	+	+	+	+	+	+	+	+	+	+	+	+	+	+	+	+	+	+	R
+	+	+	+	+	+	+	+	+	+	+	+	+	+	+	+	+	+	+	+	+	+	+	+	+	S
+	+	+	+	+	+	+	+	+	+	+	+	+	+	+	+	+	+	+	+	+	+	+	+	+	T
+	+	+	+	+	+	+	+	+	+	+	+	+	+	+	+	+	+	+	+	+	+	+	+	+	U
+	+	+	+	+	+	+	+	+	+	+	+	+	+	+	+	+	+	+	+	+	+	+	+	+	V
+	+	+	+	+	+	+	+	+	+	+	+	+	+	+	+	+	+	+	+	+	+	+	+	+	W
+	30	+	29	+	28	+	27	+	26	+	25	+													X
+	+	+	+	+	+	+	+	+	+	+	+	+	+	+	+	+	+	+	+	+	+	+	+	+	Y
+	+	+	+	+	+	+	+	+	+	+	+	+	+	+	+	+	+	+	+	+	+	+	+	+	Z
+	31	+	32	+	33	+	34	+	35	+	36	+													
1	2	3	4	5	6	7	8	9	10	11	12	13	14	15	16	17	18	19	20	21	22	23	24	25	

Firm/Agency, Address

KURT LUEBKE, PLS 14546
D.J.&A P.C.
3203 RUSSELL ST
MISSOULA, MT 59801
 Phone Number: 406-721-4320

This corner record was prepared by me or under my direction and supervision.

SEAL & SIGNATURE



RECP #: 727268
 RECORDED 3/19/2018 AT 9:00 AM BK# 2579 PG# 2
 Debra K. Lee, CLERK OF LARAMIE COUNTY, WY PAGE 1 OF 1

Corner Name West 1/4 Section 12, T 14 N, R 67 W, 6th P.M.

Cross-Index No.: G-21

County: Laramie Wyoming

SBRPEPLS/PLSW: March 1994; PLSW January 1998